

# COMMERCIAL STEAM BOILER

## JF STEAM CAST IRON

### COMMERCIAL GAS-FIRED STEAM BOILER



JF Commercial Bases are pre-assembled at the factory with burner manifold, burner orifices, gas valves and electronic ignition installed; ready for field installation of the pre-tested sections and appropriate packages.

#### Plug 'N Play Harness and Junction Box

Individual base and junction box controls are designed for easy installation.

The entire boiler links together in a snap with a factory supplied color-coded wiring harness.

#### CSD1 Option

Available with a CSD-1 option to comply with CSD-1 standards where required by building code. The CSD-1 option provides the increased number of controls and safety devices required to meet CSD-1 standards.

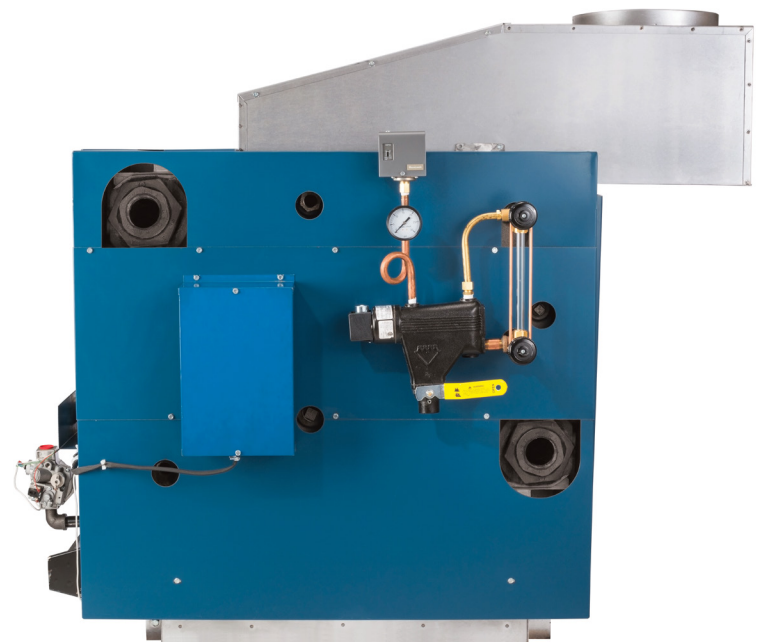
## JF FEATURES

#### Electronic Ignition Base Standard Equipment

- Base
- Fire Door
- Burner Orifice
- Manifold
- Main and Pilot Burner
- Electronic Pilot Gas Valve
- Intermittent Pilot Module
- Complete Jacket Assembly

#### Steam Trim Package

- Low Water Cut-Off
- Glass Gauge Set
- Safety Valve
- Steam Gauge
- Pressure Limit
- Drain Valve



# PRODUCT SPECIFICATIONS

## JF Steam Boiler



### RATINGS

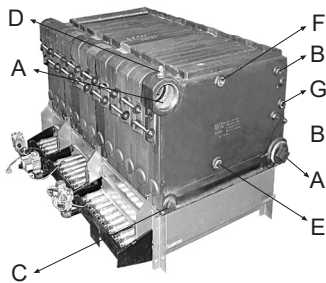
#### AHRI CERTIFIED RATINGS

#### DIMENSIONS

MODEL	Input MBH <sup>(1)</sup>	Gross Output MBH <sup>(1)</sup>	Steam PPF <sup>(2)</sup>	Steam Sq. Ft. <sup>(3)</sup>	Steam MBH <sup>(2)</sup>	Thermal Efficiency	Base Size & Flue Outlet			Chimney Size <sup>(4)</sup> I.D. x Ht.	Flue Collector Size to Chimney	Horsepower Gross Output <sup>(5)</sup>
							300 8"	400 10"	500 12"			
JF-400S	360	284	1.333	889	213	79%	0	1	0	10" x 20'	10	8.49
JF-500S	450	356	1.333	1111	267	79%	0	0	1	12" x 20'	12	10.61
JF-600S	540	427	1.333	1333	320	79%	2	0	0	12" x 20'	12	12.73
JF-700S	630	498	1.333	1556	373	79%	1	1	0	12" x 20'	12	14.86
JF-800S	720	569	1.333	1778	427	79%	0	2	0	14" x 20'	14	16.98
JF-900S	810	640	1.333	2000	480	79%	0	1	1	14" x 20'	14	19.10
JF-1000S	900	711	1.333	2222	533	79%	0	0	2	14" x 20'	14	21.22
JF-1100S	990	782	1.333	2445	587	79%	1	2	0	16" x 20'	16	23.35
JF-1200S	1080	853	1.333	2667	640	79%	0	3	0	16" x 20'	16	25.47
JF-1300S	1170	924	1.333	2889	693	79%	1	0	2	16" x 20'	16	27.59
JF-1400S	1260	995	1.333	3111	747	79%	0	1	2	18" x 20'	18	29.71
JF-1500S	1350	1067	1.333	3334	800	79%	0	0	3	18" x 20'	18	31.84

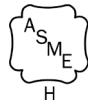
1. Ratings are at sea level to 2,000 feet. For altitudes above 2,000 feet, reduce all ratings 4% for each 1,000 feet above sea level.
2. Net steam ratings based on piping and pickup allowance of 1.333 (400-1500). Contact Technical Support before selecting boiler for installations having unusual piping and pick-up factors, such as intermittent system operations, extensive piping systems, etc.
3. Ratings in square feet are computed at 240 Btuh/square foot for steam boilers.
4. Chimney sizes shown are one option based on a typical venting system as shown in Figure 6 of the Installation Manual, and sized according to the National Fuel Gas Code, assuming Type B double wall vent and vent connectors, other venting system designs are acceptable as shown on Flue Connection and Venting section of the installation manual. For further chimney design and sizing information, consult the National Fuel Gas Code, ANSI Z223.1/NFPA 54-latest revision, or ASHRAE HVAC Systems and Equipment Handbook, Chimney, Gas Vent, and Fireplace Systems, or the Standard for Chimneys, Fireplaces, Vents, and Solid Fuel Burning Appliances. NFPA 211. Follow standard engineering practice.
5. Ratings based on 33,500 Btuh per horsepower.

### RIGHT & LEFT END TAPPINGS



A: Supply & Return	4"
B: Primary LWCO & Gauge Glass Set	1/2"
C: Drain (Left & Right End)	3/4"
D: Plugged	1/2"
E: Accessories	1"
*F: Safety Valve	1"
G: Plugged or Electronic (Probe Type) LWCO	3/4"

*\*If opening F is to be used for something other than the Safety Valve or Pressure Relief Valve, or the Safety/Relief Valve is larger than 1", the Safety/Relief Valve must be installed in the Header Piping as near to the boiler as possible.*



# ECR international

ECR International, Inc. 2260 Dwyer Avenue, Utica, NY 13501  
Tel. 800 253 7900  
www.ecrinternational.com



All specifications subject to change without notice.  
©2024 ECR International, Inc.  
PN 240009442 Rev. [10/16/24]