

CONDENSING GAS FIRED
FLOOR OR WALL MOUNTED
BOILER

**PARTS, KITS &
OPTIONAL ACCESSORIES**

**Model
240**

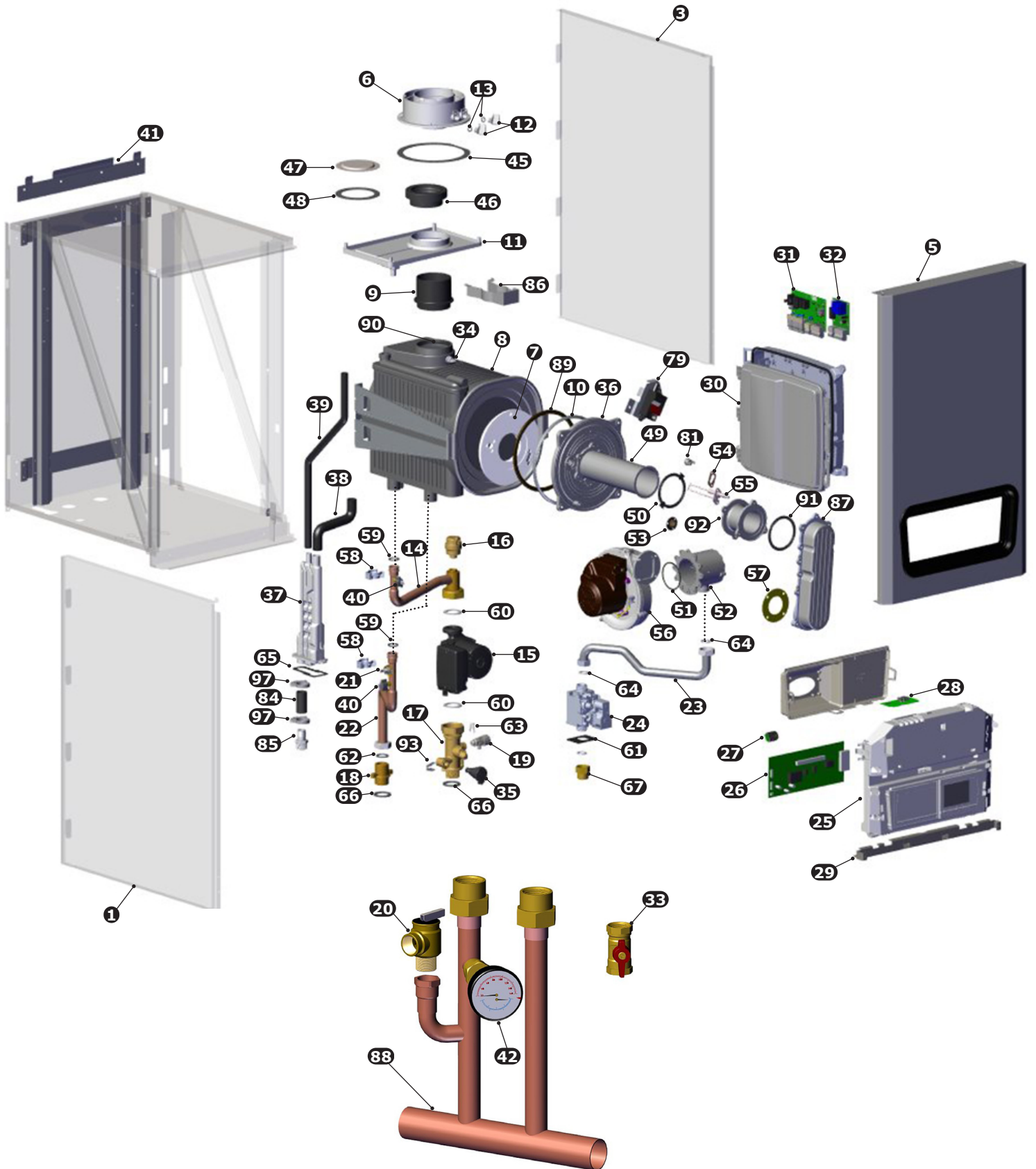
ORDERING INSTRUCTIONS
ORDER PARTS THROUGH YOUR NEAREST SUPPLIER.
WHEN ORDERING PARTS, OBTAIN MODEL NUMBER AND SERIAL NUMBER
FROM DATA PLATE ON YOUR BOILER.
INCLUDE FOLLOWING INFORMATION WHEN ORDERING.

PART NUMBER _____

PART DESCRIPTION _____

BOILER MODEL NUMBER _____

BOILER SERIAL NUMBER _____



PARTS AND ACCESSORIES

ITEM	PN	DESCRIPTION
1	UCS KIT 550003296 DMG KIT 50003273	LEFT PANEL
3	UCS KIT 550003297 DMG KIT 50003274	RIGHT PANEL
5	UCS KIT 550003298 DMG KIT 550003275	FRONT PANEL
6	550003264	ASSEMBLY FLUE ADAPTER, 240
7	BD721984602V	HEAT EX INSULATION PANEL
8	550003256	BD,HTEX,240
9	BD767370101V	BD,FUMES,ADPTR,HTEX,240/HO
10	BD722003801V	BD,SEAL,HTEX,DOOR,FRNT
11	550003263	TRAY- VENT CONDENSATION
12	BD7718578	BD,TEST POINT PLUG SCREW HOLE
13	BD710107801V	O-RING TEST PORT PLUG
14	550003255	PIPE - PUMP TO HX
15	550003248	PUMP
16	BD000005652731	AIR VENT
17	550003252	HYDRO BLOCK 240
18	550003260	SUPPLY CONNECTION
19	BD710188101V	DRAIN TAP
20	VR00102	PRESSURE RELIEF SAFETY VALVE
21	BD710626001V	HIGH LIMIT TEMP SWITCH
22	550003254	FLOW PIPE 240
23	550003261	GAS SUPPLY PIPE
24	550003244	GAS VALVE
25	BD763892408V	BD,CTRL BOX,UI,240/380
26	550003268	BD,PCB PCU04 NA ASSY,240/380
27	BD764979601V	BD,PARAMETER STICK,240/380
28	550003269	BD,CONTROLLER SAFETY SU-01,240/380
29	BD721871101V	BD,CONTROL BOX HINGE,240/380
30	BD764986901V	BD,SCU ELECTRIC BOX,240/380
31	550003266	BD,PCB SCU-S02,240/380
32	550003267	BD,HONEYWELL OTZTC PCB,240/380
33	BD000005643331	GAS SHUTOFF VALVE (3/4")
34	BD711180100	NTC FLUE SENSOR
35	550003253	WATER PRESSURE SENSOR
36	550003257	HEAT EXCHANGER DOOR
37	550003247	CONDENSATION TRAP
38	BD721622201V	HOSE- HEAT EX TO TRAP
39	BD721632601V	HOSE- VENT TRAY TO TRAP
40	BD722601801V	WATER TEMP SENSOR
41	109009874	WALL MOUNTING BRACKET
42	1260006SP	TEMPERATURE / PRESSURE GAGE
45	BD000005410712	GASKET- FLUE ADAPTER TO CABINET
46	BD767373901V	GASKET- HEAT EXCHANGER ADAPTER TO FLUE TRAY
47	BD710300601V	COVER PLATE- TWIN PIPE INTAKE
48	BD7103005V	GASKET-COVER PLATE, TWIN PIPE INTAKE

ITEM	PN	DESCRIPTION
49	550003246	BURNER 65 KW
50	BD711408002V	BURNER GASKET
51	BD000003402101	O-RING- VENTURI 70MM X 3MM
52	550003265	POLIDORO VENTURI
53	550003157	SIGHT GLASS KIT
55	550003249	IGNITER (WITH GASKET)
54	BD710185302V	IGNITER GASKET
56	550003245	FAN (WITH GASKETS)
57	BD710115602V	GASKET FAN/AIR GAS DUCT
58	BD721623501V	CLIP- PIPES TO HEAT EXCHANGER
59	BD000005411331	O-RING 20MM X2.6MM
60	BD000005402141	PUMP GASKET, G1-1/2
61	BD710390601V	GASKET, GAS VALVE
62	BD000005405001	GASKET, G1 22X30,3X2
63	BD710110601V	CLIP, HYDROBLOCK PLUG
64	BD710113001V	GASKET, G3/4 17X24X2
65	BD721696402V	GASKET- CONDENSATE TRAP
66	BD710397801V	GASKET- G1 FOAM SEALING
67	BD722270601V	ADAPTER G3/4 X 3/4NPT
*68	BD722577701V	BD,HARN,PWR,SPLY,AUX CTRL,240/380
*69	240011690	HARN,SCU BUS WRG,X11-X2,240-380
*70	240011691	HARN,SCU BUS WRG,X2-K1,AUX,240/380
*71	240011685	HARN,PCBX4,POWER TO FAN,240/380
*72	BD721804702V	BD,WRG HARN X5-IGNTR,240/380
*73	240011686	HARN,PCBX6,TO GV,240/380
*74	BD721807501V	BD,WRG HARN X8,PUMP,240
*75	240011687	HARN,PCBX9,TO SAFETY/FAN,240
*76	BD721814101V	BD,WRG HARN X10,SENSORS,240
*77	240011694	HARN,PWR,SPLY,115V,240/380
*78	BD721804702V	IGNITION CABLE
79	550003250	IGNITION MODULE
81	BD711427701V	SAFETY THERMOSTAT 260 DEG C
84	240011904	HOSE,EPDM,BLK,1"OD,.75ID
85	240008838	CPLG,3/4"MLX.75"BRB
86	BD722393301V	BD,FXG BRKT CLCTR CNDS,240
87	550003258	BD,AIR GAS MNFLD
88	240011771	LABOR SAVOR MANIFOLD
89	BD000005212781	ROPE GASKET
90	BD000005411030	GASKET (WATER TRAY TO HX)
91	BD710114502V	GASKET,BNR,SPCR/EXT
92	550003259	SPACER EXTENSION
93	BD710654101V	CLIP, PRESSURE SENSOR
*94	BD9950580	FUSE 2A 250V
*95	240013297	FUSE,4A,5X20MM
*96	240013296	FUSE,6.3A,5X20MM
97	240013465	SNAP GRIP CLAMP

* NOT SHOWN

KITS - HEAT EXCHANGER & COMPONENTS

KIT 550003256 - HEAT EXCHANGER REPLACEMENT KIT INCLUDES:			
POS	PN	DESCRIPTION	QTY
8	BD711163601V	HEAT EXCHANGER, 240	1
10	BD722003801V	SEAL, HTEX, DOOR, FRNT	1
64	BD710113001V	GASKET G3/4 17X24X2	1
45	BD000005410712	SEAL, FLUE ADAPTER	1
60	BD000005402141	PUMP GASKET GI 1/2, 44X30X2MM	1
59	BD000005411331	O RING 20MM X 2.6MM	2
62	BD000005405001	GASKET G1 22X30.3X2	1
46	BD767373901V	SEAL, CONDENSATE TRAY	1
89	BD000005212781	ROPE GASKET	1
-	240011705	INSTRUCTIONS	1

KIT 550003246 - BURNER REPLACEMENT KIT INCLUDES:			
POS	PN	DESCRIPTION	QTY
64	BD710113001V	GASKET G3/4 17X24X2	2
49	BD710401901V	BURNER 65 KW BURNER	1
50	BD711408002V	BURNER GASKET	1
91	BD710114502V	GASKET, BURNER, SPCR/EXTN	1
-	240011700	INSTRUCTIONS	1

KIT 550003257 - HEAT EXCHANGER DOOR REPLACEMENT KIT INCLUDES:			
POS	PN	DESCRIPTION	QTY
36	BD721962602V	DOOR, FRNT, HTEX	1
10	BD722003801V	SEAL, HTEX, DOOR, FRNT	1
81	BD711427701V	TSTAT, SFTY, 260°C	1
7	BD721984602V	STONE, INSUL	1
54	BD710185302V	GASKET, IGN, PEN	1
50	BD711408002V	BURNER, GASKET	1
89	BD000005212781	ROPE GASKET	1
64	BD710113001V	GASKET, G3/4 17X24X2	1
91	BD710114502V	GASKET, BRN, SPCR/EXTN	1
*	BD710112202V	GASKET, SIGHT, GLASS	1
-	240011706	INSTRUCTIONS	1

* NOT SHOWN

KITS - HEAT EXCHANGER & COMPONENTS

KIT 550003605 - COMBUSTION CHAMBER CLEANING KIT INCLUDES:

POS	PN	DESCRIPTION	QTY
10	BD722003801V	SEAL, HEAT EXCH DOOR, FRONT	1
89	BD000005212781	SEAL,FBRGLS,ROPE	1
64	BD710113001V	GASKET G3/4 17X24X2	1
*	240011636	GLOVE, LATEX, BLK, LRG, S-19810	4
*	240011637	SHLD, HTEX, CLNG	1
*	240011639	BAG, POLY, 12"X26", 2MIL, S5779	4
*	240011640	BRUSH, 2"X3"M W/HANDLE, 1" STIFF BRISTLES	1
-	240012413	INSTRUCTIONS	1

KIT 550003249 - IGNITION ELECTRODE REPLACEMENT KIT INCLUDES:

POS	PN	DESCRIPTION	QTY
55	BD711010702V	IGNITION ELECTRODE	1
54	BD710185302V	IGNITION ELECTRODE GASKET	1
*	240012293	WRENCH,HEX,3MM	1
-	240011681	INSTRUCTION	1

KIT 550003250 - SPARK GENERATOR REPLACEMENT KIT INCLUDES:

POS	PN	DESCRIPTION	QTY
79	BD764905801V	IGNITER, 115V	1
-	240011682	INSTRUCTIONS	1

* NOT SHOWN

KITS - OTHER MAJOR COMPONENTS

KIT 550003245 - FAN REPLACEMENT KIT INCLUDES:			
POS	PN	DESCRIPTION	QTY
56	BD722358701V	FAN, RG137,120V	1
57	BD710115602V	GASKET, VENTURI/FAN/AIR DUCT	1
51	BD000003402101	ORING, 70X3	1
64	BD71011301V	GASKET G 3/4 17X24X2	1
50	BD711408002V	GASKET BURNER	1
-	240011699	INSTRUCTIONS	1

KIT 550003248 - PUMP REPLACEMENT KIT INCLUDES:			
POS	PN	DESCRIPTION	QTY
15	BD722354801V	PUMP 115V 60HZ	1
73	BD0000540214	GASKET G1 1/2,44X30X2MM	2
-	240011702	INSTRUCTIONS	1

KITS - GAS VALVE & COMPONENTS

KIT 550003244 - GAS VALVE REPLACEMENT KIT INCLUDES:			
POS	PN	DESCRIPTION	QTY
64	BD710113001V	GASKET G3/4 17X24X2	2
24	BD721613001V	SIT GAS VALVE 848	1
61	BD710390601V	GASKET GAS VALVE	1
*	BD000008101721	SCREW M4X 10	2
*	BD000008319417	WASHER 5.3X10 C70	2
*	BD000005405001	GASKET, G1 22X30,3X2	1
-	240011698	INSTRUCTIONS	1

KIT 550003261 - GAS PIPE REPLACEMENT KIT INCLUDES:			
POS	PN	DESCRIPTION	QTY
23	BD711178602V	PIPE GAS	1
64	BD710113001V	SEALING WASHER G 3/4 17X24X2	2
-	240011723	INSTRUCTIONS	1

* NOT SHOWN

KITS - AIR & GAS COMPONENTS

KIT 550003265 - VENTURI REPLACEMENT KIT INCLUDES:

POS	PN	DESCRIPTION	QTY
52	BD710402202V	MXR,BICLAP, 30, VENTURI	1
51	BD000003402101	O-RING 70X3	1
64	BD710113001V	GASKET G 3/4 17X24X2	1
-	240011724	INSTRUCTIONS	1

KIT 550003258 - AIR GAS COLLECTOR REPLACEMENT KIT INCLUDES:

POS	PN	DESCRIPTION	QTY
87	BD711187501V	AIR GAS MANIFOLD	1
57	BD710115602V	GASKET,VENTURI/FAN/AIR DUCT	1
64	BD710113001V	GASKET G 3/4 17X24X2	2
91	BD710114502V	GASKET, BURNER SPCR EXTN	1
-	240011725	INSTRUCTIONS	1

KIT 550003259 - AIR GAS COLLECTOR EXTENSION REPLACEMENT KIT INCLUDES:

POS	PN	DESCRIPTION	QTY
92	BD000005212922	SPCR/EXTN	1
50	BD721543101V	ASSY, GASKET	2
64	BD710113001V	GASKET G3/4 17X24X2	1
91	BD710114502V	GASKET, BRN SPCR/EXT	1
-	240011726	INSTRUCTIONS	1

KIT 550003264 - FLUE CONNECTION REPLACEMENT KIT INCLUDES:

POS	PN	DESCRIPTION	QTY
6	BD000005670522	ASSY, FLUE ADPTR	1
45	BD000005410712	SEAL, FLUE, ADPTR	1
12	BD7718578	TEST POINT PLUG SCREW HOLE	2
13	BD710107801V	O-RING TEST PORT PLUG	2
-	240011727	INSTRUCTIONS	1

KIT 550003848 - FLUE ADAPTER GASKET REPLACEMENT - INCLUDES:

POS	PN	DESCRIPTION	QTY
*	BD5410850	FLUE ADAPTER GASKET 80MM	1
*	BD5410860	FLUE ADAPTER GASKET 125MM	1
45	BD000005410712	FLUE ADAPTER SEAL	1
13	BD710107801V	O-RING 8.73 X 1.78	2
48	BD7103005V	TWIN PIPE COVER PLATE GASKET	1
47	BD710300601V	TWIN PIPE COVER PLATE	1
-	240011727	INSTRUCTIONS	1

* NOT SHOWN

KITS - PIPING

KIT 550003254 - SUPPLY PIPING REPLACEMENT KIT INCLUDES:

POS	PN	DESCRIPTION	QTY
22	BD711178701V	FLOW PIPE	1
21	BD710626001V	OVER TEMP, THERMOSTAT	1
40	BD722601801V	NTC WATER	1
59	BD000005411331	O-RING, 20,24X2,62	1
58	BD721623501V	FIXING CLIP - HEX PIPES	1
62	BD000005405001	GASKET G1 22X30, 3X2 WRC	1

KIT 550003255 - RETURN PIPING REPLACEMENT KIT INCLUDES:

POS	PN	DESCRIPTION	QTY
14	BD722270001V	RETURN PIPE 1.70	1
59	BD000005411331	O-RING 20,24X2,62	1
16	BD000005652731	AIR VENT VLV G3/8	1
58	BD721623501V	FIXING CLIP - HEX PIPES	1
40	BD722601801V	NTC WATER	1
60	BD000005402141	PUMP GASKET G1 1/2, 44X30X2MM	1

KIT 550003260 - SUPPLY CONNECTION FITTING REPLACEMENT KIT INCLUDES:

POS	PN	DESCRIPTION	QTY
18	BD711237001V	NPL G1", X 1" NPT	1
66	BD710397801V	GSKT, G1", 31X42, FOAM	1
*	BD710189501V	SCREW M5C10TEI+CR-8.8, HXHEAD	2
*	BD000008319417	WASHERS, 3X10 C70	2
62	BD000005405001	GASKET, GI 22X30.3X2	1

KIT 550003252 - HYDROBLOCK ASSEMBLY REPLACEMENT KIT INCLUDES:

POS	PN	DESCRIPTION	QTY
17	BD711238101V	HYDROBLOC	1
19	BD710188101V	DRAINING TAP	1
66	BD710397801V	GASKET G1", 31X42, FOAM	1
60	BD000005402141	PUMP GASKET G1 1/2, 44X30X2MM	1
-	240011703	INSTRUCTIONS	1

* NOT SHOWN

KITS - CONDENSATE COMPONENTS

KIT 550003247 - CONDENSATE TRAP REPLACEMENT KIT INCLUDES:			
POS	PN	DESCRIPTION	QTY
37	BD765674901V	SIPHON, H220	1
65	BD721696402V	GASKET SIPHON	1
-	240011701	INSTRUCTIONS	1

KIT 550003262 - CONDENSATE PIPE REPLACEMENT KIT INCLUDES:			
POS	PN	DESCRIPTION	QTY
38	BD721622201V	HOSE, HTEX, SIPHON	1
39	BD721632601V	HOSE CONDS DRN, SIPHON	1

KIT 550003263 - CONDENSATE TRAY REPLACEMENT KIT INCLUDES:			
POS	PN	DESCRIPTION	QTY
11	BD767553501V	CONDENSATE TRAY	1
46	BD767373901V	SEAL, COND TRAY	1

* NOT SHOWN

KITS - CONTROL BOARDS

KIT 550003266 - PCB SCU-S02 REPLACEMENT KIT INCLUDES:			
POS	PN	DESCRIPTION	QTY
31	BD764989601V	PCB SCU-S02	1
-	240011707	INSTRUCTIONS	1

KIT 550003267 - PCB INTERFACE REPLACEMENT KIT INCLUDES:			
POS	PN	DESCRIPTION	QTY
32	BD764997601V	HONEYWELL OTZTC PCB	1
-	240011708	INSTRUCTIONS	1

KIT 550003268 - PCB PCU-04 REPLACEMENT KIT INCLUDES:			
POS	PN	DESCRIPTION	QTY
26	BD764710901V	PCB PCU-04	1
-	240011709	INSTRUCTIONS	1

KIT 550003269 - SAFETY PCB REPLACEMENT KIT INCLUDES:			
POS	PN	DESCRIPTION	QTY
28	BD760299003V	CONTROLLER SAFETY SU-01	1
-	240011710	INSTRUCTIONS	1

KIT 550003272 - CONFIGURATION KEY KIT INCLUDES:			
POS	PN	DESCRIPTION	QTY
*	BD764979601V	PARAMETER STICK	1
-	240011712	INSTRUCTIONS	1

KIT 550003270 - PCB DISPLAY AND CONTROL BOX REPLACEMENT KIT INCLUDES:			
POS	PN	DESCRIPTION	QTY
25	BD763892408V	PCB DISPLAY	1
-	240011711	INSTRUCTIONS	1

* NOT SHOWN

KITS - SENSOR

KIT 550003253 - PRESSURE SENSOR REPLACEMENT KIT INCLUDES:			
POS	PN	DESCRIPTION	QTY
35	BD710109101V	PRESSURE SENSOR	1
93	BD710654101V	CLIP, PRESSURE SENSOR	1
-	240011704	INSTRUCTIONS	1

WIRING - REPLACEMENT

PN	DESCRIPTION
BD721796800	FAN WIRING
BD721804702V	IGNITOR WIRING
BD721807000	GAS VALVE WIRING
BD721807501V	POWER SUPPLY PUMP WIRING
BD721838500	SAFETY THERMOSTAT/FAN WIRING
BD721814101V	SENSORS WIRING
BD722266400	CONTROL BOX/PCB SCU CONNECTING
BD722267400	SECONDARY ELECTRIC BOX POWER WI
240011692	POWER SUPPLY PUMP UP26-96F WIRIN
BD722577701V	PCB POWER WIRING SECONDARY BOX
BD722577800	POWER SUPPLY WIRING
BD763892408V	PCB/SWITCH WIRING

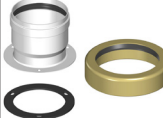
CONVERSION KIT

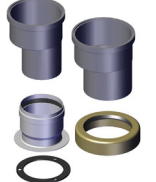
KIT 550003316 - CONVERSION KIT NG TO LP KIT INCLUDES:			
POS	PN	DESCRIPTION	QTY
*	BD710718804V	POLIDORO VENTURI FOR LP	1
*	240011680	LABEL, CONVERSION,GPL	1
*	240008688	LBEL, CSA, CONVERTED BY	1
-	240011739	INSTRUCTIONS	1

* NOT SHOWN

JACKET PANEL & VENTING CONVERSION KITS

PANEL ASSEMBLIES		
KIT #	DESCRIPTION	QTY
UCS KIT 550003296 DMG KIT - 550003273	LEFT PANEL ASSEMBLY	1
UCS KIT 550003297 DMG KIT 550003274	RIGHT PANEL ASSEMBLY	1
UCS KIT 550003298 DMG KIT 550003275	FRONT PANEL ASSEMBLY	1

CONCENTRIC TO POLYPROPYLENE		
	PN	DESCRIPTION
	KHG714089010	TO CONVERT FROM CONCENTRIC TO 3 in TWIN PIPE POLYPROPYLENE

CONCENTRIC TO CPVC		
	PN	DESCRIPTION
	550003403	TWIN PIPE ADAPTER 60 mm TO 3 in CPVC

IN USA CONTACT:



2201 DWYER AVENUE, UTICA, NY 13501
TEL. 800 325 5479

WWW.ECRINTERNATIONAL.COM

All specifications subject to change without notice.
©2022 ECR International, Inc.

IN CANADA CONTACT:

GRANBY INDUSTRIES L.P.
INDUSTRIES GRANBY S.E.C.

98 DES INDUSTRIES,
COWANSVILLE, QC.
J2K 0A1. CANADA.
450-378-2334

SUPPORTTECHNIQUE@GRANBYINDUSTRIES.COM
WWW.GRANBYINDUSTRIES.COM