



CONDENSING GAS FIRED
FLOOR OR WALL MOUNTED
BOILER

**PARTS, KITS &
OPTIONAL ACCESSORIES**

**Model
UCS-240**

ORDERING INSTRUCTIONS
ORDER PARTS THROUGH YOUR NEAREST SUPPLIER.
WHEN ORDERING PARTS, OBTAIN MODEL NUMBER AND SERIAL NUMBER
FROM DATA PLATE ON YOUR BOILER.
INCLUDE FOLLOWING INFORMATION WHEN ORDERING.

PART NUMBER _____

PART DESCRIPTION _____

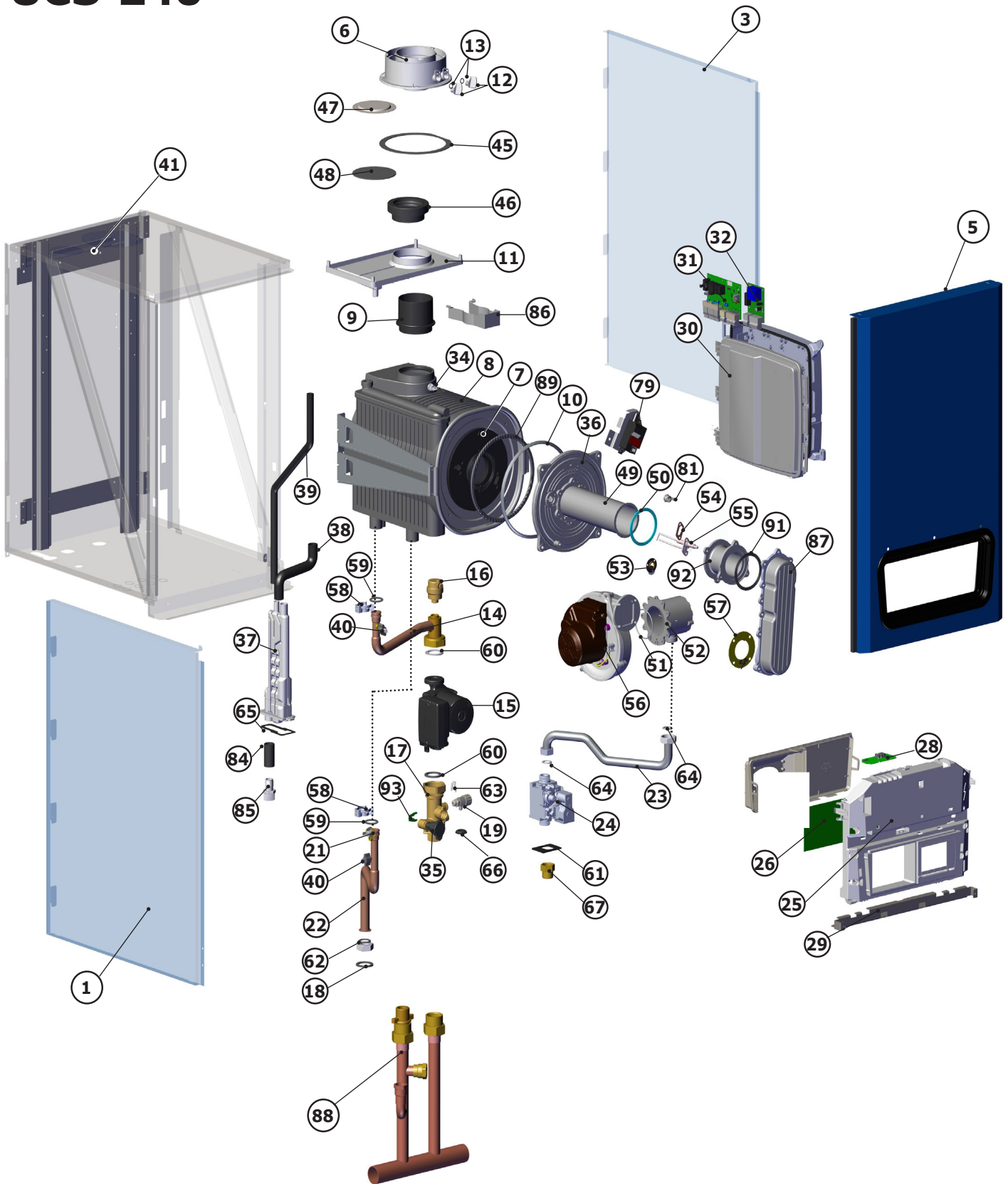
BOILER MODEL NUMBER _____

BOILER SERIAL NUMBER _____



Manufactured by:
ECR International Inc.
2201 Dwyer Avenue, Utica, NY 13501
Tel. 800 253 7900
www.ecrinternational.com
PN240011655 REV. D [04/30/2019]

Model UCS-240



DESCRIPTION OF PARTS

| POS. | PART NUMBER | DESCRIPTION |
|------|----------------|---|
| 1 | 550003296 | PNL LT,240 |
| 3 | 550003297 | PNL,RT,UCS-240 |
| 5 | 550003298 | KIT,JKT,FRNT UCS-240 |
| 6 | BD000005670522 | ASSEMBLY FLUE ADAPTER, 240(550003264) |
| 7 | BD721984602V | HEAT EX INSULATION PANEL |
| 8 | 550003256 | BD,HTEX,240 |
| 9 | BD767370101V | BD,FUMES,ADPTR,HTEX,240/HO |
| 10 | BD722003801V | BD,SEAL,HTEX,DOOR,FRNT |
| 11 | BD767553501V | TRAY- VENT CONDENSATION (550003263) |
| 12 | 550003264 | TEST PORT PLUG |
| 13 | BD710107801V | O-RING TEST PORT PLUG |
| 14 | 550003255 | PIPE - PUMP TO HX |
| 15 | 550003248 | PUMP |
| 16 | BD000005652731 | AIR VENT |
| 17 | 550003252 | HYDRO BLOCK 240 |
| 18 | 550003260 | SUPPLY CONNECTION |
| 19 | BD710188101V | DRAIN TAP |
| *20 | VR00102 | PRESSURE RELIEF SAFETY VALVE |
| 21 | BD710626001V | HIGH LIMIT TEMP SWITCH |
| 22 | 550003254 | FLOW PIPE 240 |
| 23 | 550003261 | GAS SUPPLY PIPE |
| 24 | 550003244 | GAS VALVE |
| 25 | BD763892408V | BD,CTRL BOX,UI,240/380 |
| 26 | 550003268 | BD,PCB PCU04 NA ASSY,240/380 |
| *27 | BD764979601V | BD,PARAMETER STICK,240/380 |
| 28 | 550003269 | BD,CONTROLLER SAFETY SU-01,240/380 |
| 29 | BD721871101V | BD,CONTROL BOX HINGE,240/380 |
| 30 | BD764986901V | BD,SCU ELECTRIC BOX,240/380 |
| 31 | 550003266 | BD,PCB SCU-S02,240/380 |
| 32 | 550003267 | BD,HONEYWELL OTZTC PCB,240/380 |
| *33 | BD000005643331 | GAS SHUTOFF VALVE (3/4") |
| 34 | BD711180100 | NTC FLUE SENSOR |
| 35 | 550003253 | WATER PRESSURE SENSOR |
| 36 | 550003257 | HEAT EXCHANGER DOOR |
| 37 | 550003247 | CONDENSATION TRAP |
| 38 | BD721622201V | HOSE- HEAT EX TO TRAP |
| 39 | BD721632601V | HOSE- VENT TRAY TO TRAP |
| 40 | BD722601800 | WATER TEMP SENSOR |
| 41 | 109009874 | WALL MOUNTING BRACKET |
| *42 | 1260006SP | TEMPERATURE / PRESSURE GAGE |
| 45 | BD000005410712 | GASKET- FLUE ADAPTER TO CABINET |
| 46 | BD767373901V | GASKET- HEAT EXCHANGER ADAPTER TO FLUE TRAY |
| 47 | BD710300601V | COVER PLATE- TWIN PIPE INTAKE |

| | | |
|-----|----------------|--------------------------------------|
| 48 | BD710784801V | GASKET-COVER PLATE, TWIN PIPE INTAKE |
| 49 | 550003246 | BURNER 65 KW |
| 50 | BD711408002V | BURNER GASKET |
| 51 | BD000003402101 | O-RING- VENTURI 70mm X 3mm |
| 52 | 550003265 | POLIDORO VENTURI |
| 53 | 550003157 | SIGHT GLASS KIT |
| 54 | 550003249 | IGNITER (WITH GASKET) |
| 55 | BD710185302V | IGNITER GASKET |
| 56 | 550003245 | FAN (WITH GASKETS) |
| 57 | BD710115602V | GASKET FAN/AIR GAS DUCT |
| 58 | BD721623501V | CLIP- PIPES TO HEAT EXCHANGER |
| 59 | BD000005411331 | O-RING 20MM X2.6mm |
| 60 | BD000005402141 | PUMP GASKET, G1-1/2 |
| 61 | BD710390601V | GASKET, GAS VALVE |
| 62 | BD000005405001 | GASKET, G1 22x30,3x2 |
| 63 | BD710110601V | CLIP, HYDROBLOCK PLUG |
| 64 | BD710113001 | GASKET, G3/4 17X24X2 |
| 65 | BD721696401V | GASKET- CONDENSATE TRAP |
| 66 | *BD710397801V | GASKET- G1 FOAM SEALING |
| 67 | BD722270601V | ADAPTER G3/4 X 3/4NPT |
| *68 | BD722577701V | BD,HARN,PWR,SPLY,AUX CTRL,240/380 |
| *69 | 240011690 | HARN,SCU BUS WRG,X11-X2,240-380 |
| *70 | 240011691 | HARN,SCU BUS WRG,X2-K1,AUX,240/380 |
| *71 | 240011685 | HARN,PCBX4,POWER TO FAN,240/380 |
| *72 | BD721804702V | BD,WRG HARN X5-IGNTR,240/380 |
| *73 | 240011686 | HARN,PCBX6,TO GV,240/380 |
| *74 | BD721807501V | BD,WRG HARN x8,PUMP,240 |
| *75 | 240011687 | HARN,PCBX9,TO SAFETY/FAN,240 |
| *76 | BD721814101V | BD,WRG HARN x10,SENSORS,240 |
| *77 | 240011694 | HARN,PWR,SPLY,115V,240/380 |
| *78 | BD721804702V | IGNITION CABLE |
| 79 | 550003250 | IGNITION MODULE |
| 81 | BD711427701V | SAFETY THERMOSTAT 260 DEG C |
| 84 | 240011904 | HOSE,EPDM,BLK,1"OD,.75ID |
| 85 | 240008838 | CPLG,3/4"MLx.75"BRB |
| 86 | BD722393301V | BD,FXG BRKT CLCTR CNDS,240 |
| 87 | 550003258 | BD,AIR GAS MNFLD |
| 88 | 240011771 | LABOR SAVOR MANIFOLD |
| 89 | BD000005212781 | ROPE GASKET |
| *90 | BD000005411030 | GASKET (WATER TRAY TO HX) |
| 91 | BD710114502V | GASKET,BNR,SPCR/EXT |
| 92 | 550003259 | SPACER EXTENSION |
| 93 | BD710654101V | CLIP, PRESSURE SENSOR |

* NOT SHOWN

KITS - HEAT EXCHANGER & COMPONENTS

| KIT 550003256 - HEAT EXCHANGER REPLACEMENT KIT INCLUDES: | | | |
|---|----------------|-------------------------------|-----|
| POS | PN | DESCRIPTION | QTY |
| 8 | BD711163601V | HEAT EXCHANGER, 240 | 1 |
| 10 | BD722003801V | SEAL, HTEX, DOOR, FRNT | 1 |
| 64 | BD710113001V | GASKET G3/4 17X24X2 | 1 |
| 45 | BD000005410712 | SEAL, FLUE ADAPTER | 1 |
| 60 | BD000005402141 | PUMP GASKET GI 1/2, 44X30X2MM | 1 |
| 28 | BD711180100 | NTC FLUE SENSOR | 1 |
| 59 | BD000005411331 | O RING 20MM X 2.6MM | 2 |
| 62 | BD000005405001 | GASKET G1 22X30.3X2 | 1 |
| 46 | BD767373901V | SEAL, CONDENSATE TRAY | 1 |
| 89 | BD000005212781 | ROPE GASKET | 1 |
| NS | 240011705 | INSTRUCTIONS | 1 |

| KIT 550003246 - BURNER REPLACEMENT KIT INCLUDES: | | | |
|---|--------------|---------------------------|-----|
| POS | PN | DESCRIPTION | QTY |
| 64 | BD710113001V | GASKET G3/4 17X24X2 | 2 |
| 49 | BD710401901V | BURNER 65 KW BURNER | 1 |
| 50 | BD711408002V | BURNER GASKET | 1 |
| 91 | BD710114502V | GASKET, BURNER, SPCR/EXTN | 1 |
| NS | 240011700 | KIT INSTRUCTIONS | 1 |

| KIT 550003257 - HEAT EXCHANGER DOOR REPLACEMENT KIT INCLUDES: | | | |
|--|----------------|--------------------------|-----|
| POS | PN | DESCRIPTION | QTY |
| 36 | BD721962602V | DOOR, FRNT, HTEX | 1 |
| 10 | BD722003801V | SEAL, HTEX, DOOR, FRNT | 1 |
| 81 | BD711427701V | TSTAT, SFTY, 260°C | 1 |
| 7 | BD721984602V | STONE, INSUL | 1 |
| 54 | BD710185302V | GASKET, IGN, PEN | 1 |
| 50 | BD711408002V | BURNER, GASKET | 1 |
| 89 | BD000005212781 | ROPE GASKET | 1 |
| 64 | BD710113001V | GASKET, G3/4 17X24X2 | 1 |
| 91 | BD710114502V | GASKET, BRN, SPCR/EXTN | 1 |
| NS | BD710112202V | GASKET, SIGHT, GLASS | 1 |
| NS | 240011706 | INSTRUCTIONS - 240011706 | 1 |

NS = NOT SHOWN

KITS - HEAT EXCHANGER & COMPONENTS

KIT 550003605 - COMBUSTION CHAMBER CLEANING KIT INCLUDES:

| POS | PN | DESCRIPTION | QTY |
|-----|----------------|---|-----|
| 10 | BD722003801V | SEAL, HEAT EXCH DOOR, FRONT | 1 |
| 89 | BD000005212781 | SEAL,FBRGLS,ROPE | 1 |
| 64 | BD710113001V | GASKET G3/4 17X24X2 | 1 |
| NS | 240011636 | GLOVE, LATEX, BLK, LRG, S-19810 | 4 |
| NS | 240011637 | SHLD, HTEX, CLNG | 1 |
| NS | 240011639 | BAG, POLY, 12"X26", 2MIL, S5779 | 4 |
| NS | 240011640 | BRUSH, 2"X3"M W/HANDLE, 1" STIFF BRISTLES | 1 |
| NS | 240012413 | INSTRUCTIONS | 1 |

KIT 550003249 - IGNITION ELECTRODE REPLACEMENT KIT INCLUDES:

| POS | PN | DESCRIPTION | QTY |
|-----|--------------|---------------------------|-----|
| 55 | BD711010701V | IGNITION ELECTRODE | 1 |
| 54 | BD710185302V | IGNITION ELECTRODE GASKET | 1 |
| NS | 240012293 | WRENCH,HEX,3MM | 1 |
| NS | 240011681 | KIT INSTRUCTION | 1 |

KIT 550003250 - SPARK GENERATOR REPLACEMENT KIT INCLUDES:

| POS | PN | DESCRIPTION | QTY |
|-----|--------------|------------------|-----|
| 79 | BD764905801V | IGNITER, 115V | 1 |
| NS | 240011682 | KIT INSTRUCTIONS | 1 |

NS = NOT SHOWN

KITS - OTHER MAJOR COMPONENTS

| KIT 550003245 - BLOWER REPLACEMENT KIT INCLUDES: | | | |
|---|----------------|------------------------------|------------|
| POS | PN | DESCRIPTION | QTY |
| 56 | BD722358701V | FAN, RG137,120V | 2 |
| 57 | BD710115602V | GASKET, VENTURI/FAN/AIR DUCT | 1 |
| 51 | BD000003402101 | ORING, 70X3 | 1 |
| 64 | BD71011301V | GASKET G 3/4 17X24X2 | 1 |
| 50 | BD711408002V | GASKET BURNER | 1 |
| NS | 240011699 | KIT INSTRUCTIONS | 1 |

| KIT 550003248 - PUMP REPLACEMENT KIT INCLUDES: | | | |
|---|--------------|-------------------------|------------|
| POS | PN | DESCRIPTION | QTY |
| 15 | BD722354801V | PUMP 115V 60HZ | 1 |
| 73 | BD0000540214 | GASKET G1 1/2,44X30X2MM | 2 |
| NS | 240011702 | KIT INSTRUCTIONS | 1 |

KITS - GAS VALVE & COMPONENTS

| KIT 550003244 - GAS VALVE REPLACEMENT KIT INCLUDES: | | | |
|--|---------------|-------------------------|------------|
| POS | PN | DESCRIPTION | QTY |
| 64 | BD710113001V | GASKET G3/4 17X24X2 | 2 |
| 24 | BD721613001V | SIT GAS VALVE 848 | 1 |
| 61 | BD710390601V | GASKET GAS VALVE | 1 |
| NS | BD00000810172 | SCREW M4X 10 | 2 |
| NS | BD00000831941 | WASHER 5.3X10 C70 | 2 |
| NS | BD00000831941 | GASKET G1 22X30,3X2 WRC | 2 |
| NS | 240011698 | KIT INSTRUCTIONS | 1 |

| KIT 550003261 - GAS PIPE REPLACEMENT KIT INCLUDES: | | | |
|---|--------------|------------------------------|------------|
| POS | PN | DESCRIPTION | QTY |
| 23 | BD711178602V | PIPE GAS | 1 |
| 64 | BD710113001V | SEALING WASHER G 3/4 17X24X2 | 2 |
| NS | 240011723 | INSTRUCTIONS - 240011723 | 1 |

NS = NOT SHOWN

KITS - AIR & GAS COMPONENTS

| KIT 550003265 - VENTURI REPLACEMENT KIT INCLUDES: | | | |
|--|----------------|-------------------------|------------|
| POS | PN | DESCRIPTION | QTY |
| 52 | BD710402202V | MXR,BICLAP, 30, VENTURI | 1 |
| 51 | BD000003402101 | O-RING 70X3 | 1 |
| 64 | BD71011301V | GASKET G 3/4 17X24X2 | 1 |
| NS | 240011724 | INSTRUCTIONS | 1 |

| KIT 550003258 - AIR GAS COLLECTOR REPLACEMENT KIT INCLUDES: | | | |
|--|--------------|-----------------------------|------------|
| POS | PN | DESCRIPTION | QTY |
| 87 | BD711187501V | AIR GAS MANIFOLD | 1 |
| 57 | BD710115602V | GASKET,VENTURI/FAN/AIR DUCT | 1 |
| 64 | BD710113001V | GASKET G 3/4 17X24X2 | 2 |
| 91 | BD710114502V | GASKET, BURNER SPCR EXTN | 1 |
| NS | 240011725 | INSTRUCTIONS | 1 |

| KIT 550003259 - AIR GAS COLLECTOR EXTENSION REPLACEMENT KIT INCLUDES: | | | |
|--|----------------|----------------------|------------|
| POS | PN | DESCRIPTION | QTY |
| 92 | BD000005212922 | SPCR/EXTN | 1 |
| 50 | BD721543101V | ASSY, GASKET | 2 |
| 64 | BD710113001V | GASKET G3/4 17X24X2 | 1 |
| 91 | BD710114502V | GASKET, BRN SPCR/EXT | 1 |
| NS | 240011726 | INSTRUCTIONS | 1 |

| KIT 550003264 - FLUE CONNECTION REPLACEMENT KIT INCLUDES: | | | |
|--|----------------|--------------------|------------|
| POS | PN | DESCRIPTION | QTY |
| 6 | BD000005670522 | ASSY, FLUE ADPTR | 1 |
| 45 | BD000005410712 | SEAL, FLUE, ADPTR | 1 |
| NS | 240011727 | INSTRUCTIONS | 1 |

NS = NOT SHOWN

KITS - PIPING

| KIT 550003254 - SUPPLY PIPING REPLACEMENT KIT INCLUDES: | | | |
|--|----------------|--------------------------|-----|
| POS | PN | DESCRIPTION | QTY |
| 22 | BD711178701V | FLOW PIPE | 1 |
| 21 | BD710626001V | OVER TEMP, THERMOSTAT | 1 |
| 40 | BD722601801V | NTC WATER | 1 |
| 59 | BD000005411331 | O-RING, 20,24X2,62 | 1 |
| 58 | BD721623501V | FIXING CLIP - HEX PIPES | 1 |
| 62 | BD000005405001 | GASKET G1 22X30, 3X2 WRC | 1 |

| KIT 550003255 - RETURN PIPING REPLACEMENT KIT INCLUDES: | | | |
|--|----------------|-------------------------------|-----|
| POS | PN | DESCRIPTION | QTY |
| 14 | BD722270001V | RETURN PIPE 1.70 | 1 |
| 59 | BD000005411331 | O-RING 20,24X2,62 | 1 |
| 16 | BD000005652731 | AIR VENT VLV G3/8 | 1 |
| 58 | BD721623501V | FIXING CLIP - HEX PIPES | 1 |
| 40 | BD722601801V | NTC WATER | 1 |
| 60 | BD000005402141 | PUMP GASKET G1 1/2, 44X30X2MM | 1 |

| KIT 550003260 - SUPPLY CONNECTION FITTING REPLACEMENT KIT INCLUDES: | | | |
|--|----------------|-------------------------------|-----|
| POS | PN | DESCRIPTION | QTY |
| 18 | BD711237001V | NPL G1", X 1" NPT | 1 |
| 66 | BD710397801V | GSKT, G1", 31X42, FOAM | 1 |
| NS | BD710189501V | SCREW M5C10TEI+CR-8.8, HXHEAD | 2 |
| NS | BD000008319417 | WASHERS, 3X10 C70 | 2 |
| 62 | BD000005405001 | GASKET, GI 22X30.3X2 | 1 |

| KIT 550003252 - HYDROBLOCK ASSEMBLY REPLACEMENT KIT INCLUDES: | | | |
|--|----------------|-------------------------------|-----|
| POS | PN | DESCRIPTION | QTY |
| 17 | BD711238101V | HYDROBLOC | 1 |
| 19 | BD710188101V | DRAINING TAP | 1 |
| 66 | BD710397801V | GASKET G1", 31X42, FOAM | 1 |
| 60 | BD000005402141 | PUMP GASKET G1 1/2, 44X30X2MM | 1 |
| NS | 240011703 | KIT INSTRUCTIONS | 1 |

NS = NOT SHOWN

KITS - CONDENSATE COMPONENTS

| KIT 550003247 - CONDENSATE TRAP REPLACEMENT KIT INCLUDES: | | | |
|--|--------------|----------------------------|------------|
| POS | PN | DESCRIPTION | QTY |
| 37 | BD765674901V | SIPHON, H220 | 1 |
| 65 | BD721696402V | GASKET SIPHON | 1 |
| NS | 240011701 | KIT INSTRUCTIONS 240011701 | 1 |

| KIT 550003262 - CONDENSATE PIPE REPLACEMENT KIT INCLUDES: | | | |
|--|--------------|------------------------|------------|
| POS | PN | DESCRIPTION | QTY |
| 38 | BD721622201V | HOSE, HTEX, SIPHON | 1 |
| 39 | BD721632601V | HOSE CONDS DRN, SIPHON | 1 |

| KIT 550003263 - CONDENSATE TRAY REPLACEMENT KIT INCLUDES: | | | |
|--|--------------|--------------------|------------|
| POS | PN | DESCRIPTION | QTY |
| 11 | BD767553501V | CONDENSATE TRAY | 1 |
| 46 | BD767373901V | SEAL, COND TRAY | 1 |

NS = NOT SHOWN

KITS - CONTROL BOARDS

| KIT 550003266 - PCB SCU-S02 REPLACEMENT KIT INCLUDES: | | | |
|--|--------------|--------------------|------------|
| POS | PN | DESCRIPTION | QTY |
| 31 | BD764989601V | PCB SCU-S02 | 1 |
| NS | 240011707 | INSTRUCTIONS | 1 |

| KIT 550003267 - PCB INTERFACE REPLACEMENT KIT INCLUDES: | | | |
|--|--------------|---------------------|------------|
| POS | PN | DESCRIPTION | QTY |
| 32 | BD764997601V | HONEYWELL OTZTC PCB | 1 |
| NS | 240011708 | INSTRUCTIONS | 1 |

| KIT 550003268 - PCB PCU-04 REPLACEMENT KIT INCLUDES: | | | |
|---|--------------|--------------------|------------|
| POS | PN | DESCRIPTION | QTY |
| 26 | BD764710901V | PCB PCU-04 | 1 |
| NS | 240011709 | INSTRUCTIONS | 1 |

| KIT 550003269 - SAFETY PCB REPLACEMENT KIT INCLUDES: | | | |
|---|--------------|-------------------------|------------|
| POS | PN | DESCRIPTION | QTY |
| 28 | BD760299003V | CONTROLLER SAFETY SU-01 | 1 |
| NS | 240011710 | INSTRUCTIONS | 1 |

| KIT 550003272 - CONFIGURATION KEY KIT INCLUDES: | | | |
|--|--------------|--------------------|------------|
| POS | PN | DESCRIPTION | QTY |
| NS | BD764979601V | PARAMETER STICK | 1 |
| NS | 240011712 | INSTRUCTIONS | 1 |

NS = NOT SHOWN

KITS - SENSOR

| KIT 550003253 - PRESSURE SENSOR REPLACEMENT KIT INCLUDES: | | | |
|--|--------------|-----------------------|------------|
| POS | PN | DESCRIPTION | QTY |
| 35 | BD710109101V | PRESSURE SENSOR | 1 |
| 93 | BD710654101V | CLIP, PRESSURE SENSOR | 1 |
| NS | 240011704 | INSTRUCTIONS | 1 |

WIRING - REPLACEMENT

| PN | DESCRIPTION |
|-----------|----------------------------------|
| 721796800 | FAN WIRING |
| 721804700 | IGNITOR WIRING |
| 721807000 | GAS VALVE WIRING |
| 721807500 | POWER SUPPLY PUMP WIRING |
| 721838500 | SAFETY TH/FAN WIRING |
| 721814100 | SENSORS WIRING |
| 722266400 | CONTROL BOX/PCB SCU CONNECTING |
| 722267400 | SECONDARY ELECTRIC BOX POWER WI |
| 722410200 | POWER SUPPLY PUMP UP26-96F WIRIN |
| 722577700 | PCB POWER WIRING SECONDARY BOX |
| 722577800 | POWER SUPPLY WIRING |
| 765517700 | PCB/SWITCH WIRING |

CONVERSION KIT

| KIT 550003316 - CONVERSION KIT NG TO LP KIT INCLUDES: | | | |
|--|-------------|--------------------------|------------|
| POS | PN | DESCRIPTION | QTY |
| NS | BD71071880V | POLIDORO VENTURI FOR LP | 1 |
| NS | 240011680 | LABEL, CONVERSION,GPL | 1 |
| NS | 240008688 | LBEL, CSA, CONVERTED BY | 1 |
| NS | 240004760 | LABEL RP 4"X9-1/2" UL969 | 2 |
| NS | 240011739 | INSTRUCTIONS | 1 |

NS = NOT SHOWN

KITS -CONTROL & JACKET PANELS

| KIT 550003270 - PCB DISPLAY REPLACEMENT KIT INCLUDES: | |
|--|------------|
| DESCRIPTION | QTY |
| PCB DISPLAY | 1 |
| INSTRUCTIONS - 240011711 | 1 |

| PANEL ASSEMBLIES | | | |
|-------------------------|--|--------------------|------------|
| KIT # | DESCRIPTION | DESCRIPTION | QTY |
| 550003271 | CONTROL ASSEMBLY | CONTROL COVER | 1 |
| | | CONTROL | 1 |
| 550003296 | LEFT PANEL ASSEMBLY INCLUDES: | LEFT PANEL | 1 |
| | | PANEL SEAL | 2 |
| 550003297 | RIGHT PANEL ASSEMBLY INCLUDES: | RIGHT PANEL | 1 |
| | | PANEL SEAL | 2 |
| 550003298 | FRONT PANEL ASSEMBLY INCLUDES: BEZEL, INSULATION AND LOGO | FRONT PANEL | 1 |



2201 DWYER AVENUE, UTICA, NY 13501
 TEL. 800 253 7900
WWW.ECRINTERNATIONAL.COM

ALL SPECIFICATIONS SUBJECT TO CHANGE WITHOUT NOTICE.
 ©2018 ECR INTERNATIONAL, INC.